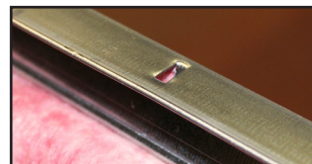
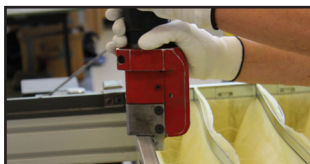


Thomas 3

Tab punch



- ✓ For joining the collar bag to the outer frame without inner legs
- ✓ Produces an effective seal
- ✓ Fast and simple to use
- ✓ Sturdy and easy to service
- ✓ Balanced by a counterbalancing block (EW-5)
- ✓ Hydraulically operated (Roger 1 or Roger 6)





Technical data

Drive:	Roger 1 or Roger 6 hydraulic unit (see separate product sheets)
Flow:	4.3 l/min
Pressure:	11.0 MPa
Hydraulic hose:	2 m as standard
Weight:	3.5 kg
Control:	Hand button
Control voltage:	24 V AC
Accessories:	Counterbalancing block, EW-5 Hydraulic hose of any length up to 10 m

Subject to changes.



johannesson

SM Johannesson AB
Box 121, SE-334 22 Anderstorp, Sweden
Tel +46 371 58 87 00, Fax +46 371 58 87 01
www.smj.se, e-mail: info@smj.se